

FMIS PRODUCTION CONTROL

Efficient and flexible Production Control



FMIS PRODUCTION CONTROL

Efficient and flexible Production Control

If your current production control system is stand-alone, inflexible, too limited for the job, lacks workflow and clear status, then now is the time to consider moving to the FMIS Production Control system.

FUNCTIONALLY RICH YET SIMPLE TO USE

The key to efficient production and assembly lies in the flexibility of bill of materials within the product and parts set-up. The set-up of production drivers and details can be an extremely laborious task but FMIS provides mass import facilities for all your production details. The loaded production assemblies can detail all the routing, purchasing, production and stock consumption rules as you turn raw materials into finished goods or assemble kits for sales.

RESOURCE MANAGEMENT

The minimum stock levels for raw materials and sub assembly, combined with the demand from sales orders for finished goods, creates a demand/time profile. The auto-replenishment process provides you with a flexible means of generating purchase orders, sub-assembly or finished goods based upon the overall sales or estimated demand. Production orders will provide sufficient information to deal with all of your routing, quality assurance and authorisation workflows. You can issue finished goods back to stock automatically or by allocating serialised items. This whole process across small and very complex bill of materials can be highly automated, resulting in significant savings in time and preparation.

FEATURE RICH

- Multi-company
- Multi-lingual
- Customisable workflows
- Electronic authorisation
- Complex bill of materials at all levels
- Full part version control
- Full engineering attachments and cad drawings linked or uploaded
- Clear distinction between raw materials, sub-assemblies and finished goods
- Material management through time based auto-replenishment
- Phantom BOMs provide additional flexibility
- Detailed and customisable production work order documentation
- Workflow routing for production work orders

- Manual or auto allocation of raw materials and sub-assemblies
- Customisable pick lists and put away documents
- WIP accounting
- Stock accounting
- Finished goods and despatch accounting
- Resource management

PRODUCTION ASSEMBLY DEFINITIONS

- Multi-level bill of materials easily constructed, copied and uploaded from a spreadsheet
- HSE and government quality control attributes recorded and tracked
- Copy bill of materials
- Version control
- Full pricing and standard costing



DEMAND MANAGEMENT

- Receive demand from quotes or sales orders
- Revise demand profile with future forecasted quotes
- Use requisitions to issue stock to internal use and balance sheet treatment as required

MATERIALS PLANNING

- Use the auto-replenishment date based ranges to produce the optimised just in time purchase and production work orders
- Provide clear visibility of current and future stock positions based on changes to demand profiles

AUTOMATED DEMAND FULFILMENT

- Utilise minimum stock levels and quantity re-order levels to automatically generate mass purchase orders to preferred or specified vendors using the latest possible order date
- Latest re-order dates automatically calculated based on the critical path in the routing and minimum lead time
- Produce mass production orders using just in time principles and simplified by using phantom bill of materials

AUTOMATED CONTROL

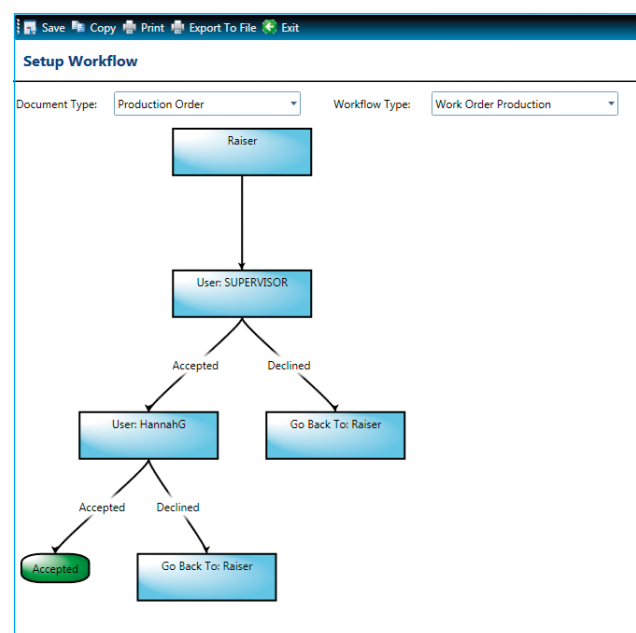
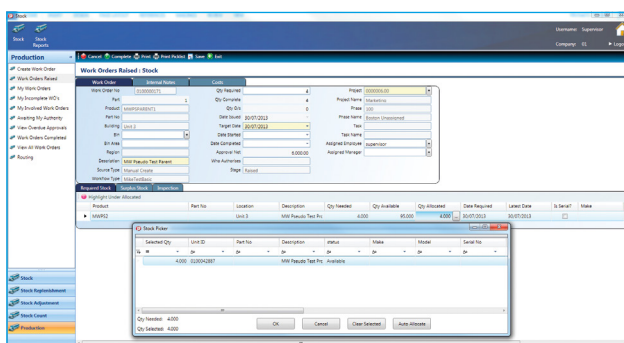
- Workflow routing for production work orders
- Auto allocation of bulk stock to materials demand for production work orders
- Manual selection or auto allocation of serialised raw materials and sub-assembly
- Customisable pick lists
- Controlled stock allocation from raw material or sub-assembly to work in progress
- Auto or manual allocation of serial numbers as finished goods are booked back into stock
- Production control reporting and pipeline analysis

REPORTING

- All documents easily customisable
- Base reports can be cloned, modified and customer specific
- Base reports can be linked to particular workflows
- Dashboards and business intelligence

Production routing

Production work orders linked to stock allocation



“

FMIS has provided a very flexible, easy to use and innovative set of solutions for our Seismic Field Operations. Time, Expenses, Rostering, performance statistics and full purchasing and inventory is now available in a very consistent manner cutting out swathes of paperwork we used to use. All of this is accessible in very remote locations with poor web connectivity. We have found FMIS to be a true innovator of solutions to our problems.

Tracy Bradshaw, **Tesla Exploration**

“

We had a very complex set of requirements and the project was handled by FMIS very efficiently and professionally. They're a great team to work with.

Danny Mansfield, **Express Newspaper Group**

“

The team at FMIS are extremely helpful and always ready to provide support when needed.

Prab Sahota, **Chesapeake**

WANT TO FIND OUT MORE?

Contact FMIS to arrange a demonstration, ask a question or to discuss your requirements.

t: +44 (0) 1227 773003
e: sales@fmis.co.uk

fmis.co.uk

167b John Wilson Business Park
Whitstable
Kent
CT5 3RA UK

FMIS[®]
Inspiring solutions